



10/06/2014
HELSINKI



City Service Development Kit

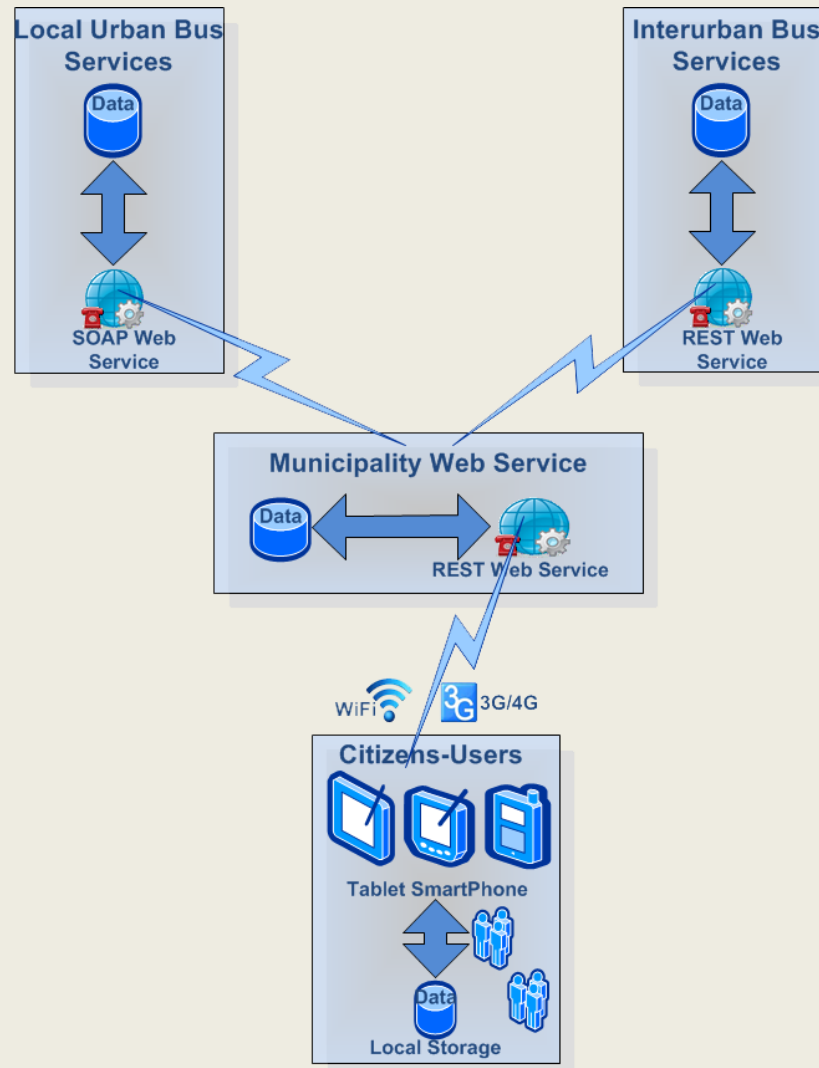


Co-funded by the
European Union

Fotis Gogoulos
Gnosis Computers

MOBILITY REPLICATION PILOT

Implementation



Data Sets



When	Type of Data have been exposed
Before CitySDK API implementation	Urban Bus Stops & Lines
	Urban Bus Arrivals
	Urban Bus Timetable
	Interurban Bus Stops & Lines
	Interurban Bus Arrivals
	Interurban Bus Timetable
	Urban Trip Planner
	Car Parking
	Taxi Stands
	Motorcycle parking and bicycle routes
	Ticket Machines



CitySDK



Co-funded by the
European Union

Data Sets



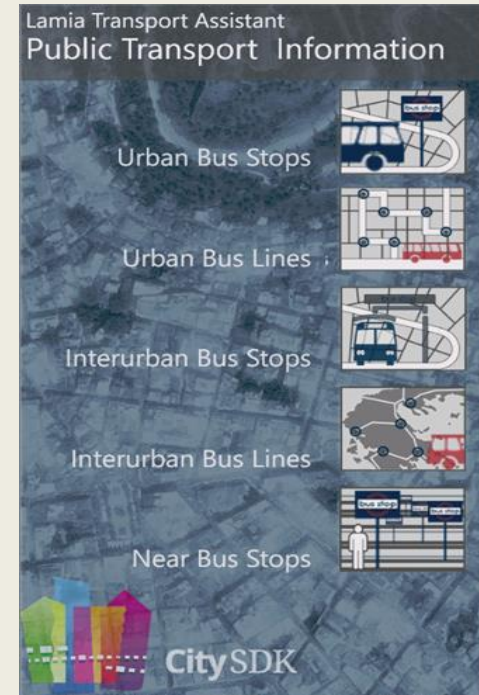
When	Type of Data have been exposed
After CitySDK API implementation	Urban Bus Stops
	Urban Bus Lines
	Lamia municipal bounds

When	Type of Data we aim to expose
After completion of CitySDK API	Interurban Bus Stops & Lines
	Car Parking
	Taxi Stands
	Motorcycle parking and bicycle routes
	Ticket Machines
	Show real time traffic data with low, medium, high congestion (information from sensors)



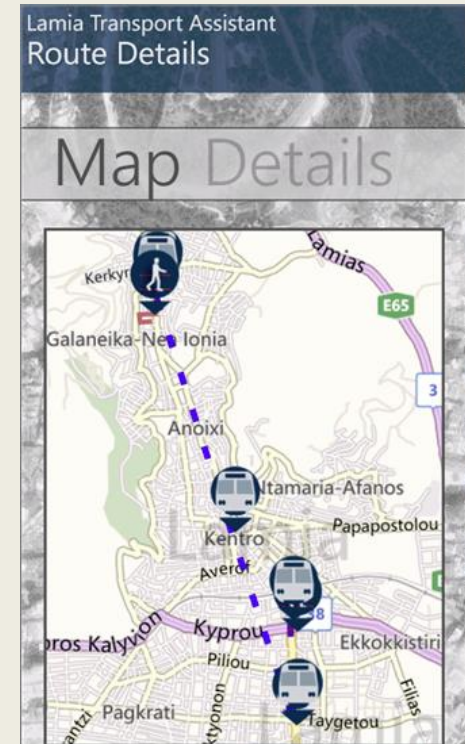
Lamia Transport Assistant

- Main API that is connected with Urban & Interurban Bus Services is hosted on municipality's infrastructure.
- 2 Apps developed, one on Android Platform and one on Windows Phone Platform.
- App Main functionalities:
 - ✓ Information for public transport (bus stops & lines, "near me bus stops", Schedule/timetable departures-arrivals, Information about taxi, parking cars, bicycles, automatic ticket vendors on list or map, etc.
 - ✓ Search/View on the map of the route between two points (from-to: stop, user's current position, user's point choice on map) using map navigation
 - ✓ Trip planner designer between two points (from-to: stop, user's current position, user's point choice on map)



Extensions

- Update CitySDK API with new datasets (municipal POIs, timetables, etc.)
- Connect the existing mobility app to CitySDK API
- Upgrade to new CitySDK API when ready
- More endpoints will be consumed by the API (Amsterdam, Istanbul, Manchester, Helsinki, Rome)
- Show real time traffic data
- Add Personalization features like social networking, ratings & conquests, Push Notifications
- Gamification techniques of the style “Find the most valuable public transport” or “Find the best route”
- Add of advertisements for a more commercial version of the API



Developer's engagement & dissemination activities

Month	Event Category	Event	Main target groups – Participants
March & April	Developer's engagement	Open Data Workshops for Academic audience in Technological Education Institution of Lamia	Students of Technological Education Institution.
March	Developer's engagement	App's Contest with winning awards	Software engineers.
May	Project's Dissemination	2 nd Lamia Night Run	Wide Public (Over 1200 participants, Over 25000 visitors of special web site)
May	Project's Dissemination	Special Hall for the promotion of CitySDK activities in Panhellenical Exhibition of Greece	Wide Public (35.000 visitors)
June	City's events center	Pan-European week of environment	Ecologists, environmental groups, (Over 800 participants)

